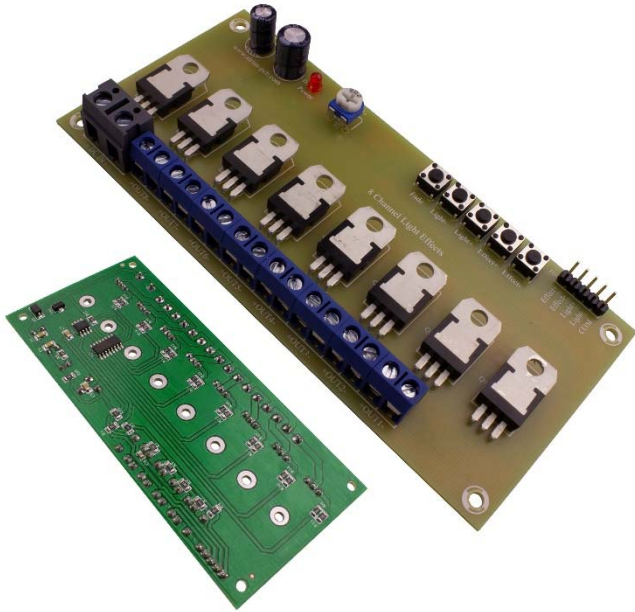




## Light Effect 8ch

№100847



The device is based on contemporary microcontroller and is an 8-channel device for light effects.

It is applicable for advertising signs, party lighting, nightclubs and etc.

### Light Effect 8ch features

- 18 light effects
- Output fade off option
- Cyclic mode
- Pin header for external connection of buttons
- Trimmer for adjusting the speed of effects
- All selected settings are stored in device's non-volatile memory
- LED indication for power supply
- 8 channels
- Current rating per channel (with heatsink): 4A
- Supply Voltage: from 8V up to 24V
- Size: 128mm x 60mm
- Suitable aluminum heatsink EV5 29mmx11.5mm with length 120mm.

### Warning!!!

Insulation sleeve and insulation sheet for **TO220** must be used when extra heatsink is mounted to the device!!!

### Description

- 8-channel device for light effects
- current rating per channel
  - without heatsink 1A
  - with heatsink 4A
- trimmer **P1** – for adjusting light effects' speed
- to terminal **J9** – DC stable voltage from **8V±24V DC**
- terminals from **J1±J8** – light fittings are turned on (for e.g. single colour LED strip or 12V lamp)
- to terminal **J10** – external buttons can be connected

### Signalling

- red LED **D2 (PWR)** – power supply is on

### Programming (with short press button):

- button **S1 (Fade)** – activates/deactivates the option to turn off light by reducing brightness
- button **S2 (Light-)** – reduces brightness with 8%
- button **S2 (Light+)** – increases brightness with 8%
- button **S4 S2 (Effect-)** – switches to previous effect
- button **S5 S2 (Effect+)** – switches to next effect

### Effects:

- from **1st to 17th** position are for single effects
- **18th** position is for cyclic mode which changes the effect every 5 seconds

### Example of Device Wiring Diagram with LED strip

